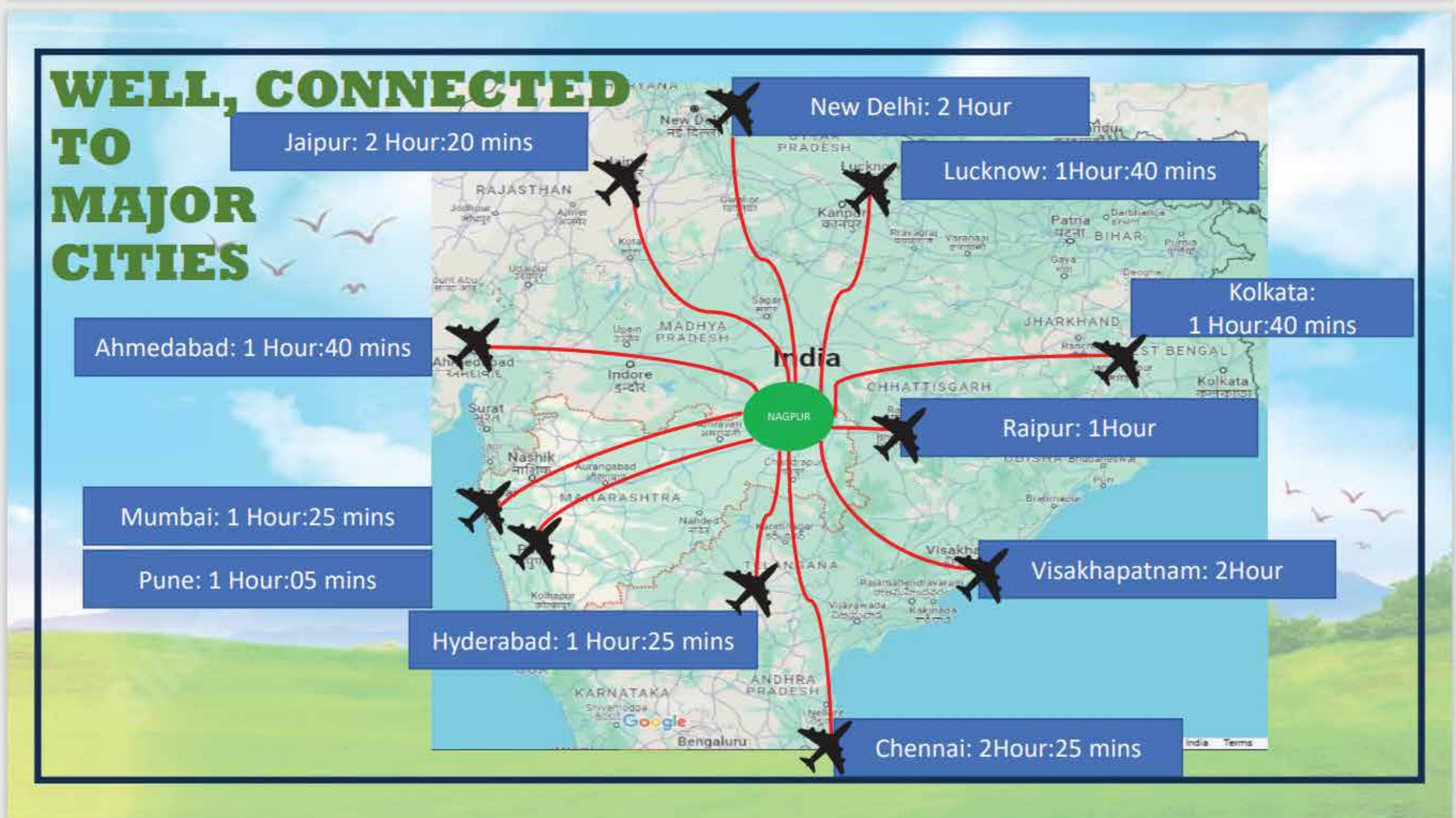




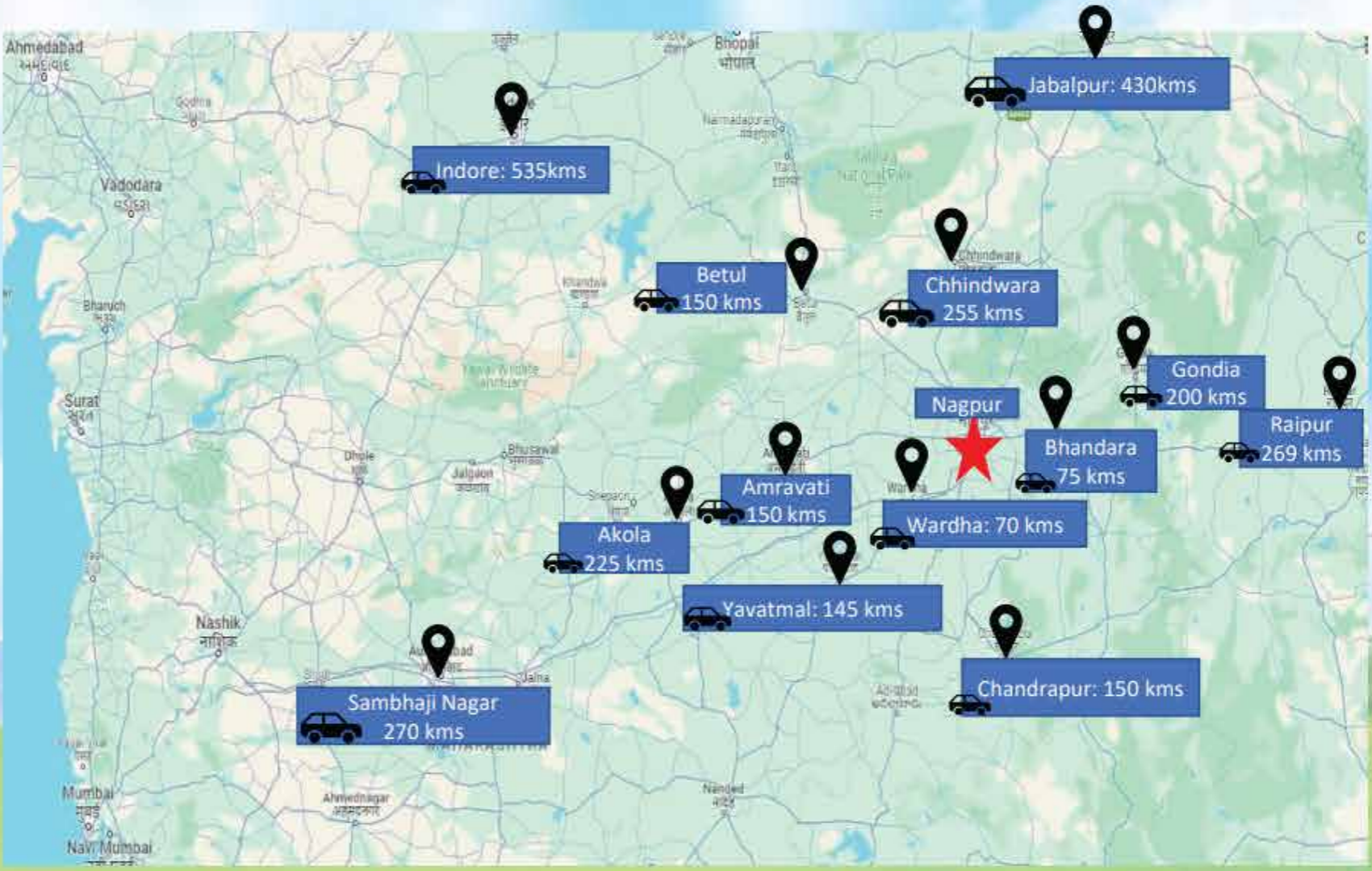
#ALifeByRiverside

ABOUT NAGPUR



ABOUT NAGPUR

**WELL, CONNECTED
TO
NEARBY
CITIES**



ABOUT NAGPUR

NAGPUR HOLDS

1st RANK IN SMART CITY

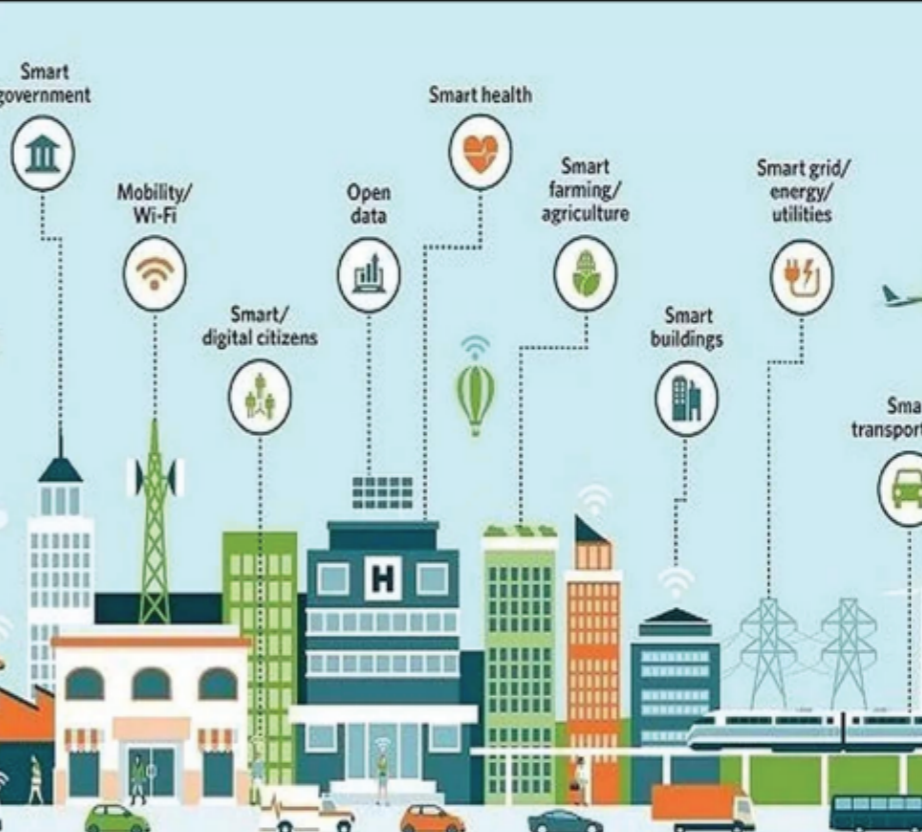
SMART CITIES		
Nagpur		
1		
360.21		

Bhopal	Ranchi	Ahmedabad
2	3	4
329.32	272.02	265.35
Surat	Vadodara	Vishakhapatnam
5	6	7
223.58	223.58	219.48
Pune	Jhansi	Davanagere
8	9	10
210.67	181.74	172.26

Ranking Score

Why City Maintained First Position | CM Fadnavis ensured NMC's share of ₹250 crore came from NIT. Instead of planning individual works, SPV headed by addl chief secretary to CM Praveen Pardeshi planned tenderSURE of ₹650 crore under which all types of works – roads, storm water drain, street light, duct etc will be executed at a time. Work order of tenderSURE issued and bhoomipuja held last week. Work order of housing scheme for 1,024 flats costing ₹222 crore issued. NMC had started execution of LED Street lights project across the city in which 7,000 will be installed in proposed Smart City area. As part of convergence scheme, SPV submitted this project too and has commenced it

Why City First Since Launch of Rankings | City failed to make it to first 20 Smart cities in 2015. CM Fadnavis approved ₹520 crore Smart and Safe City in May 2016. DIT prepared project and executed tendering process. Letter of intent was issued to L&T in Aug 2016. City was selected in second round in Sept 2016. Works of Smart and Safe City started from Oct 2016. Therefore, city stood first when rankings were launched in May 2018



SAMRUDDHI MAHAMARG

A 701 km 6 lane expressway connecting east and the west of Maharashtra. The main aim is to bring prosperity for all small villages and cities. Constructing multiple highways throughout the way connecting around 392 villages. Mahamarg will help connect better with JNPT, creating more job opportunities, reduce distance between JNPT and Nagpur- where MIHAN, the biggest development project is proposed.

19 villages will be created called as Krishi Samruddhi Kendra, dedicated to promote economical activities.

Several commercial complexes, hospitals, food plazas, commercial and residential spaces, etc will be created along the way which will drive people from different talukas to move to these areas.

Samruddhi Mahamarg will be connecting to the major markets of Nagpur, Aurangabad, and Mumbai due to the harmonious network of various agricultural products and industrialization in the state.

Samruddhi Mahamarg' will connect the State of Maharashtra with the Delhi-Mumbai Industrial Corridor (DMIC) and the Western Dedicated Freight Corridor. Also, this corridor will be directly connected to JNPT.

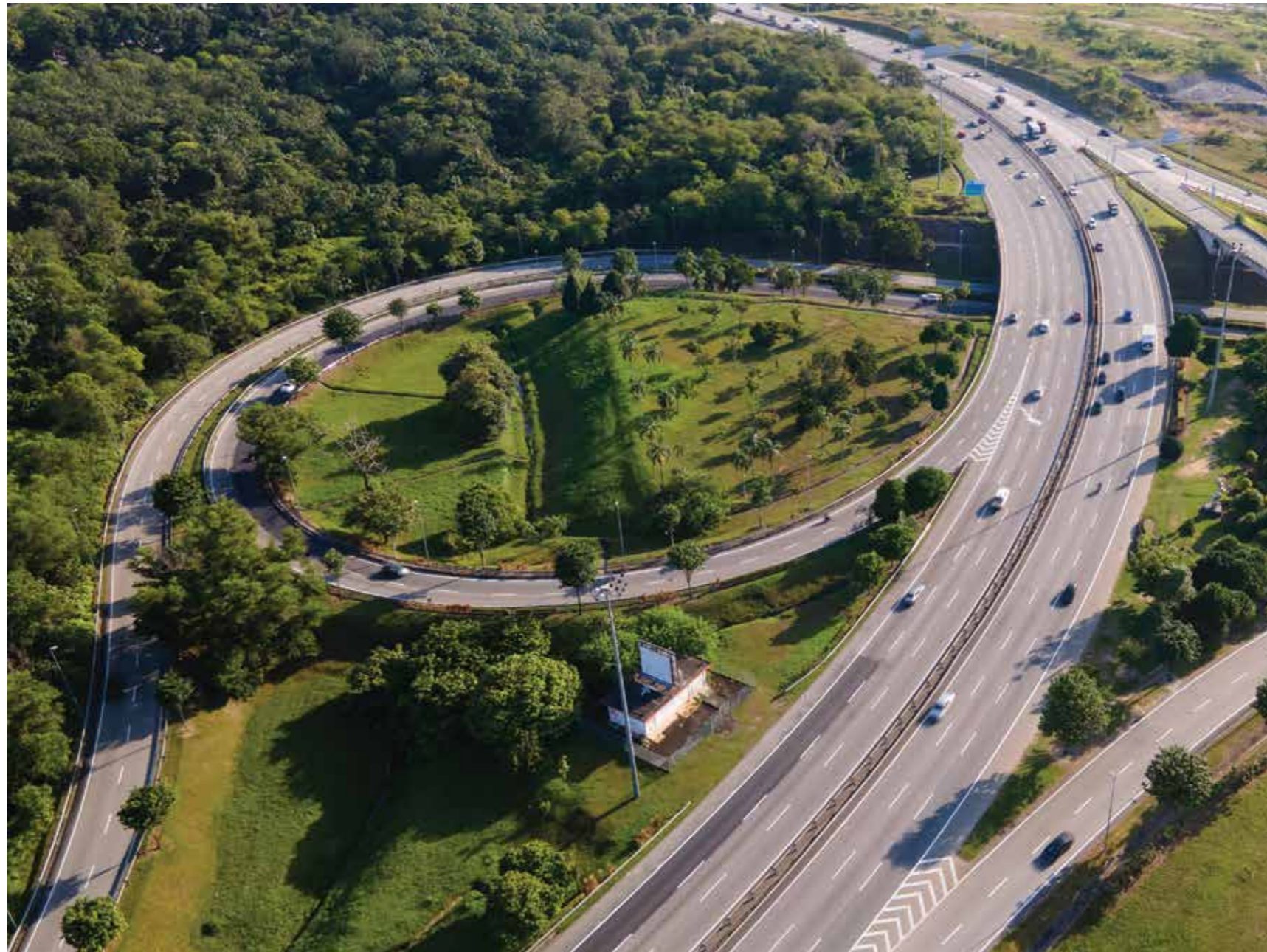


MIHAN

- Multi modal International Cargo Hub and Airport at Nagpur.
- One of the biggest development projects in India, values at ₹2581 Cr, spread in 4025 Hectares of area.
- Aim is to take advantage of Nagpur's geographic location and increase connectivity.
- Centre point is the airport, constructed by MADDC, has the capacity to serve 14 million passengers and 0.87 million tonnes of cargo per annum.
- Biggest Cargo Hub Airport for India.
- Divided in 2 parts: International Airport and SEZ
- International Airport is spread in 1364 hectares, terminal area 3 million sq. ft. Will be separated from Cargo Building Complex.
- SEZ is spread in 2086 hectares, in which 1472 hectares will be set up for processing units and the 614 hectares will be utilised to provide services for shipping and transportation companies.



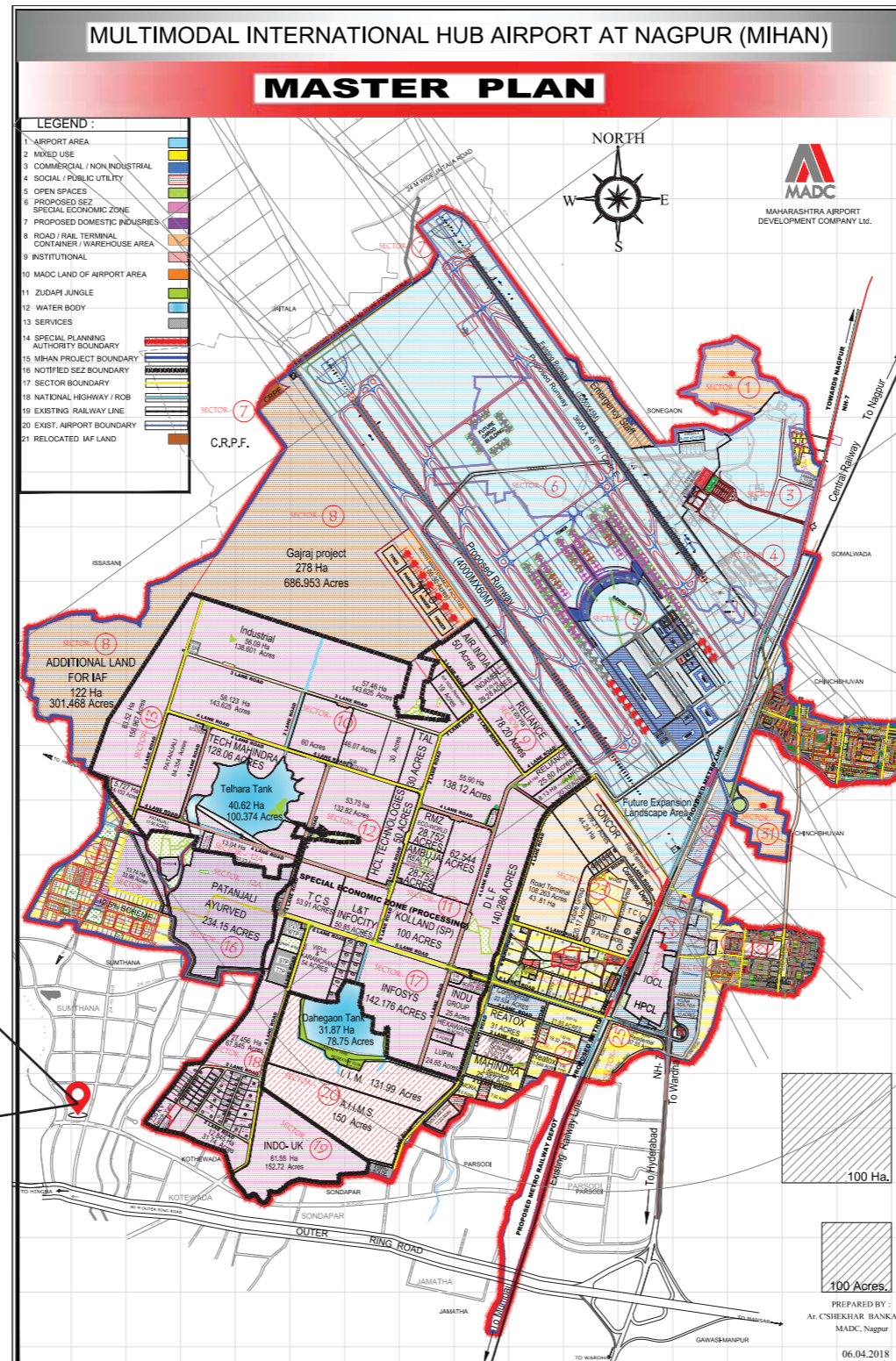
WELL CONNECTED TO NATIONAL HIGHWAYS



ONE OF THE FASTEST GROWING CITIES



NEIGHBOURHOOD MAP



THE EVERGREEN EPICENTER



HOSPITALS



RETAIL AND HOTELS



BUSINESS PARKS

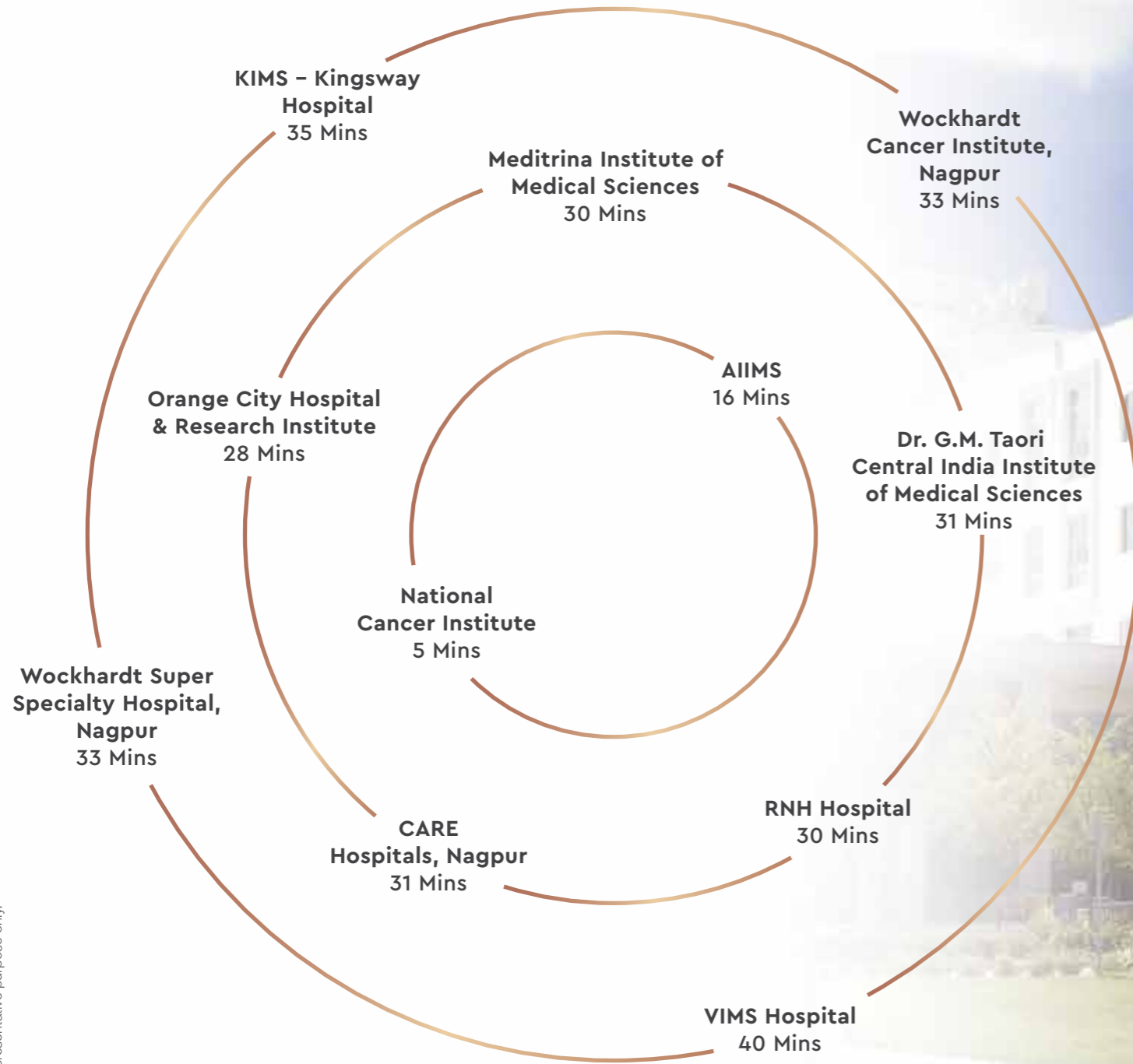


EDUCATIONAL INSTITUTIONS



UPCOMING INFRASTRUCTURE

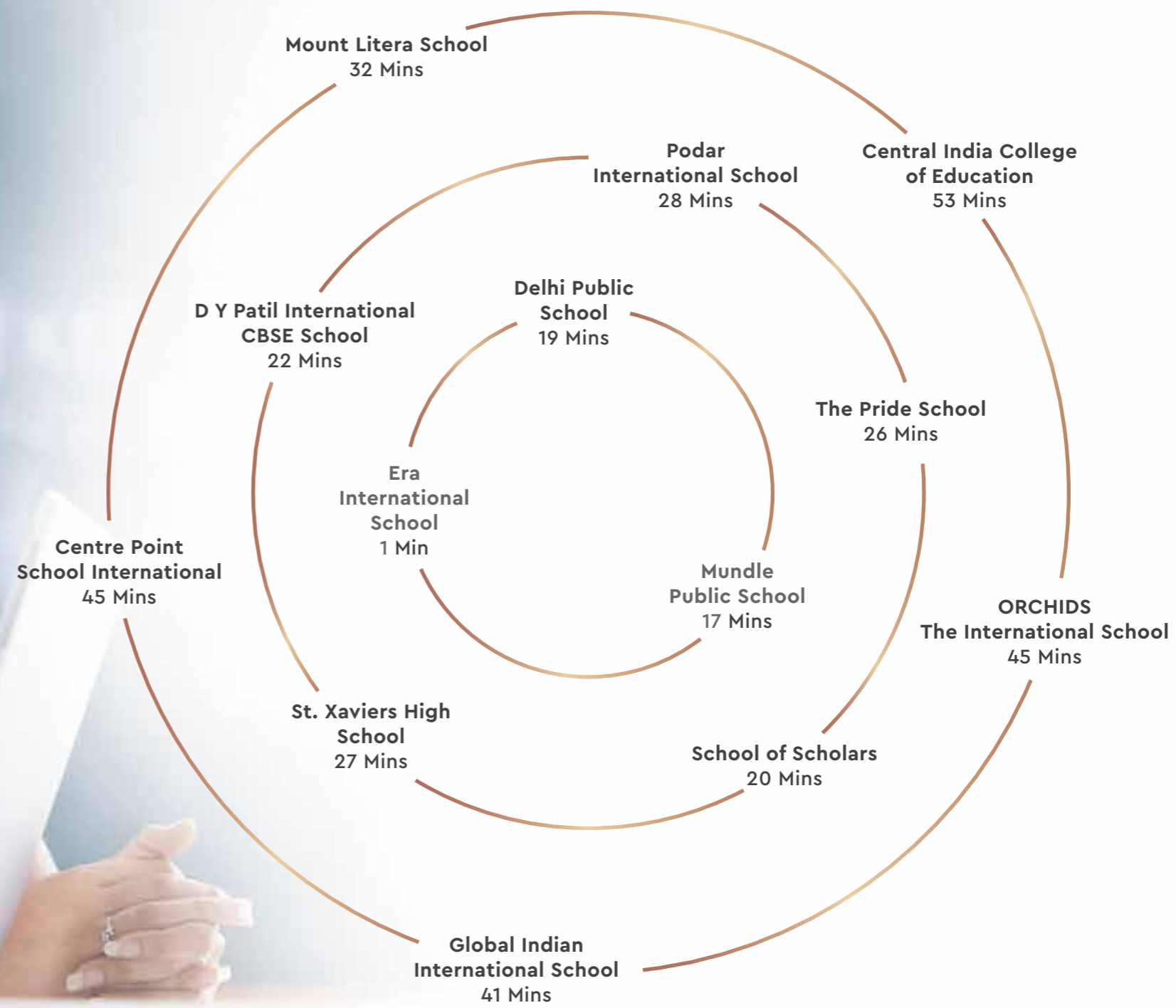
HOSPITALS



Stock image is for representative purpose only.

#Approximate travel time calculated as per google maps, subject to change as per traffic conditions.

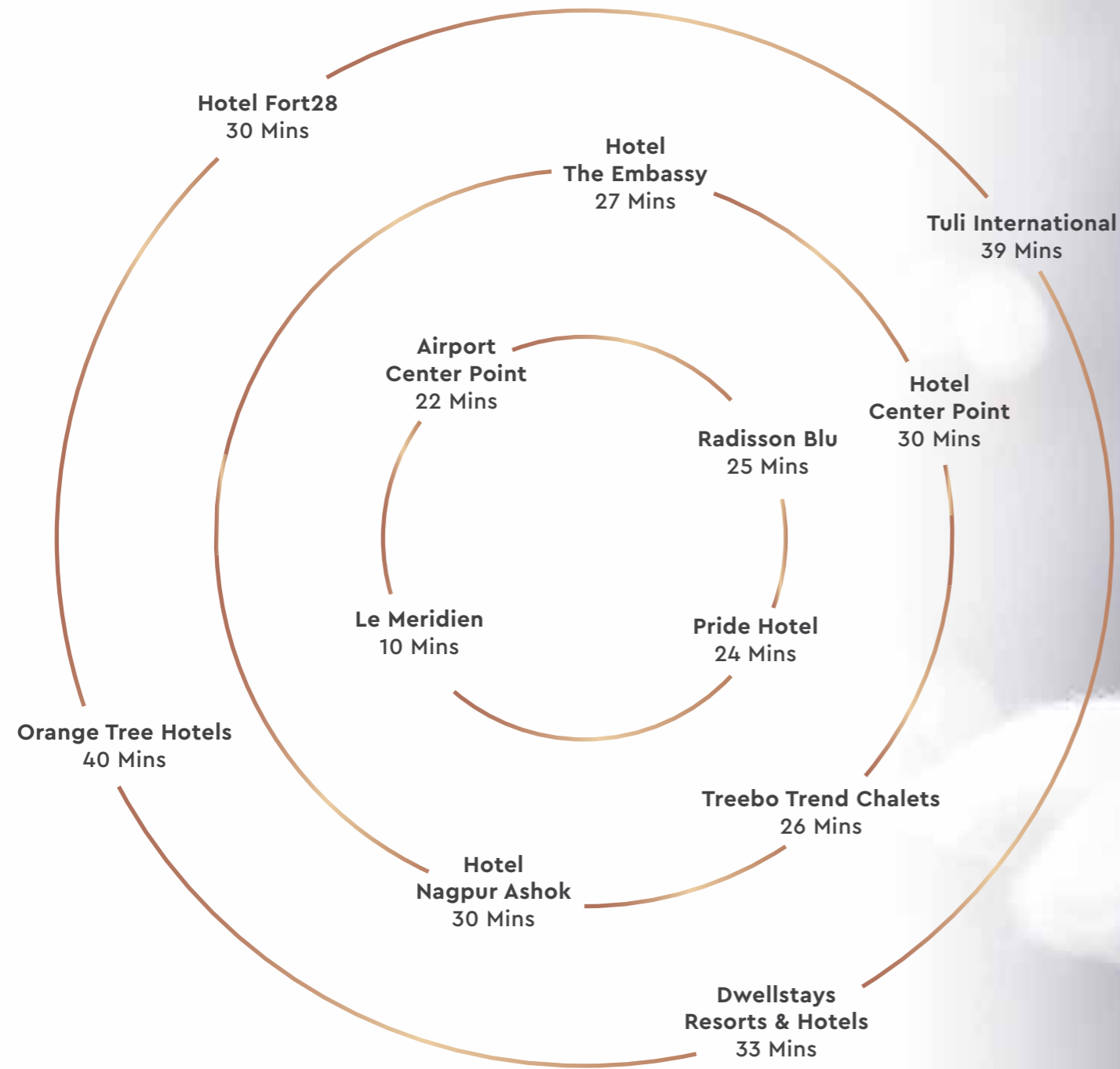
EDUCATION



Stock image is for representative purpose only.

#Approximate travel time calculated as per google maps, subject to change as per traffic conditions.

HOTELS



Stock image is for representative purpose only.



#Approximate travel time calculated as per google maps, subject to change as per traffic conditions.

A DISTINGUISHED FOREST LIFESTYLE AT THE MOST CONVENIENT LOCATION[^]

With impeccable social infrastructure and accessibility, the future of Nagpur, comes with a promise of tremendous growth and development



THE UPCOMING DEVELOPMENT
OF RESIDENTIAL HUB



STRATEGICALLY LOCATED IN THE VICINITY TOWARDS
WARDHA-AMRAWATI-HIGNA-MIHAN-BUTTIBORI



CONNECTIVITY TO NAGPUR
BY SAMRUDDHI MAHAMARG



EASY CONNECTIVITY TO
OUTER RING-ROAD, NH 44, NH 47, NH 53

YOUR DREAM LIVING EXPERIENCE IS NOW WITH A BEAUTIFUL FOREST[^], NAGPUR'S FIRST EVER THEMED PLOTTED DEVELOPMENT



40+ CLUB CLASS AMENITIES[^]



MIYAWAKI FOREST



~5.26 HECTARE OF DEDICATED
GREEN & OPEN SPACES



ENTRY FROM 24M DP ROAD



~0.40 HECTARE OF
TROPICAL ORCHARD



600 MTS LONG CANAL,
ALONGSIDE WALK-WAY AND CYCLE-WAY

[^]subject to approval from appropriate authority



**WRITING A NEW CHAPTER
OF THE JOURNEY BY THE RIVERSIDE**

WELCOME TO
GODREJ FOREST ESTATE
SAMRUDDHI MARG, NAGPUR

#ALifeByRiverside



Artist's impression. Not an actual site photograph.

WRITING NEW CHAPTER OF THE JOURNEY TO RECREATE FOREST OF LIFE



GIVING BACK TO NATURE AND BESPOKE CARE FOR ALL YOUR NEEDS.

Indulge in blissful conversation with trees and soothe your sense with host of attractive birds.



20+ CLUB CLASS AMENITIES[^], INFINITE DELIGHT.

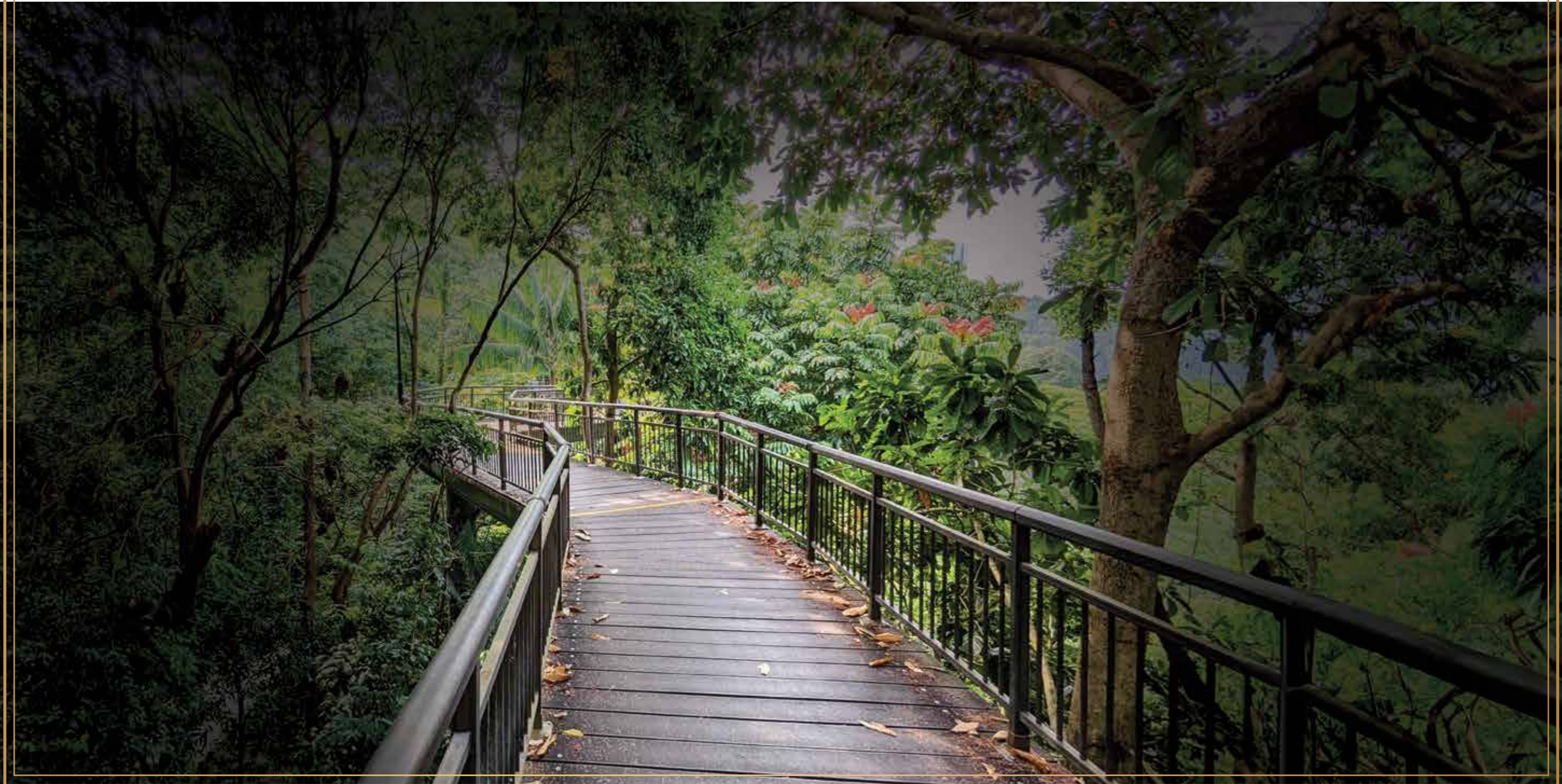
Revel in the finest amenities spread across ~0.41 hectare that promise delight for folks across all ages.
Enjoy your leisure time as you cherish every amazing moment.



[^]subject to approval from appropriate authority

Artist's impression. Not an actual site photograph.

ADVENTURE WALK



GAZEBOS IN THE WOODS



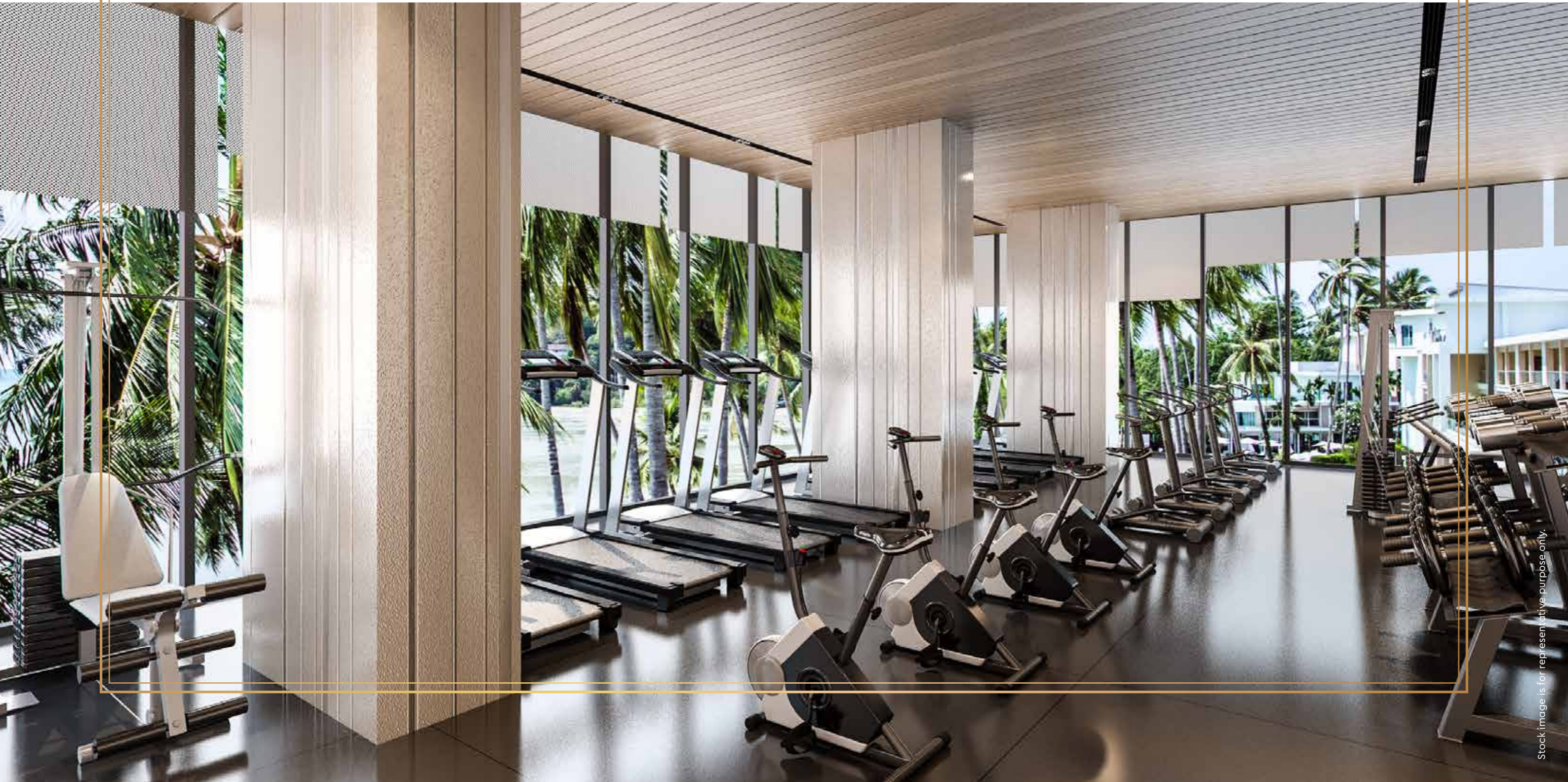
WATCHING DECK



ELEVATED WALKWAY



GYMNASIUM LOOKING AT THE FOREST



2 TENNIS COURTS



MULTIPURPOSE COURT



FRUIT ORCHARD



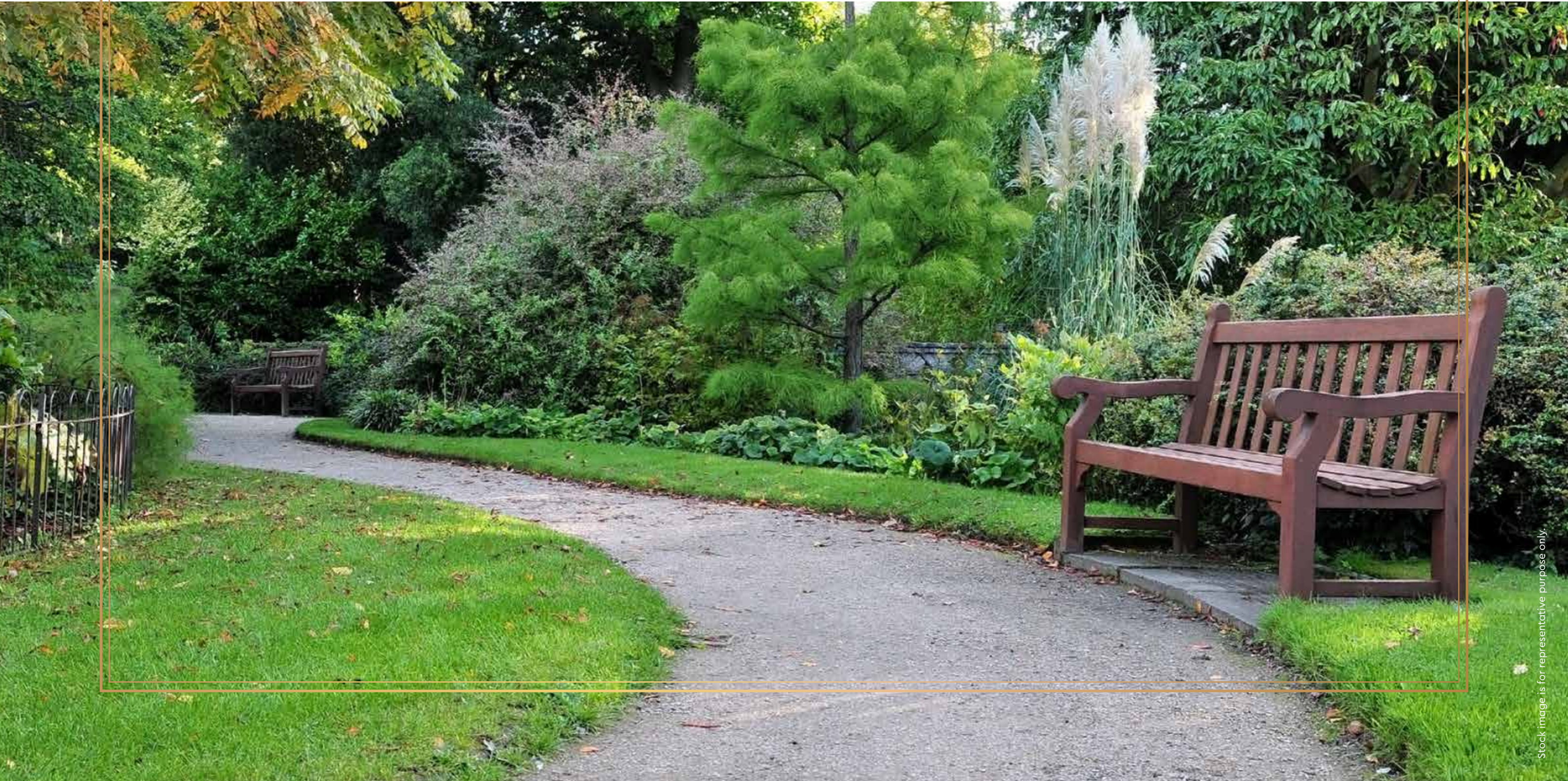
RIVERSIDE SITTING & WALKING SPACE



**SOAK IN THE AMPLE GREEN COVER AS CANOPIES
OF TREES ADORN EVERY STREET.**



SITOUT AREAS



FLOWERED AVENUES



BOTHSIDE WALKWAYS



ATTRACTIVE PLOT SIZE RANGES 102.19 – 185.8+ M²



Stock images is for representative purpose only.

FREEDOM OF CONSTRUCTION AS PER GOVT. BYLAWS / GUIDELINES



PROVISION OF ELECTRICITY AND WATERLINE PROVIDED



SCAN TO DOWNLOAD DIGITAL COLLATERALS



The project registered as Godrej Forest Estate bearing RERA Registration No. P50500054903 available at <https://maharera.mahaonline.gov.in>,
Site Office: Godrej Forest Estate, Godrej Properties Ltd., Sumthana, Higna, Nagpur, 441122

^The open spaces, amenities, etc., in the project shall be in accordance with the Final Layout Approval and all other approvals from competent authority. The Developer intends to construct a Club House/s or equivalent structures and the same is subject to approval from the appropriate authority.

#The term "forest" is used in common parlance indicative of the proposed plantation on the project and may not strictly adhere to its statutory definition. The Plantation as indicated shall be planted using the Japanese Miyawaki Technique and will be spread across the Project over the next 3 years. The number of trees is suggestive in nature and may vary.

The Sale is subject to terms of the Agreement For Sale (AFS) and allied document. All specifications of the unit shall be as per the final agreement between the Parties. Recipients are advised to apprise themselves of the necessary and relevant information of the project/offer prior to making any purchase decisions. The official website of Godrej Properties Ltd. Is www.godrejproperties.com Please do not rely on the information provided on any other website. *T&C Apply